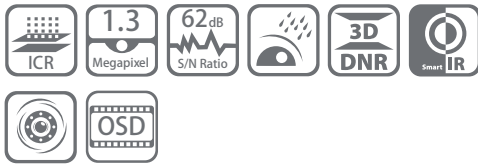


CMD3413

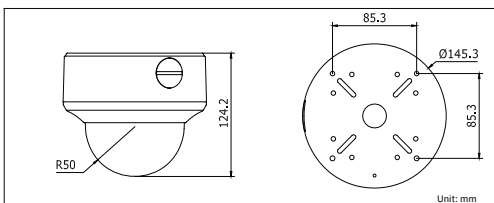
1.3 Mega Vandal Proof IR Dome Camera



Key features

- 1/3" Sensor
- Effective pixel: 1280 x 960
- 2.8 – 12mm vari-focal lens
- True Day/Night
- Up to 131ft(40m) IR distance
- OSD menu, 3D DNR & Smart IR
- IP66 weatherproof & vandal proof

Dimensions



CMD3413	
Camera	
Image Sensor	1/3" 1.3 Mega Sensor
Signal System	NTSC/PAL(Euro Version)
Effective Pixels	1280 (H) × 960 (V)
Min. Illumination	0.14 Lux (AGC ON), 0 Lux with IR
Shutter speed	NTSC: 1/30 s to 1/30,000 s PAL: 1/25 s to 1/25,000 s
Lens	2.8-12mm
Day & Night	ICR
Synchronization	Internal synchronization
Video Output	1Vp-p composite output (75 Ω/BNC)
S/N Ratio	More than 62 dB
Menu	
Lens Type	Auto Iris/ELC/ELC&ALC
Automatic Exposure	Globe AE/DWDR
AGC	Low/Middle/High/Off
Slow Shutter	Support
White Balance	Auto/Manual
D/N Mode	Color/BW/SMART IR
3D DNR	Low/Middle/High/Off
Motion Detection	Support, maximum 4 zones
Privacy Mask	On/Off, maximum 8 zones
UTC Function	Support
Language	English/Chinese
Function	Digital Wide Dynamic Range, 3D Digital Noise Reduction, Sharpness, Brightness, Saturation, Resolution, Digital Zoom, Mirror, Reset, etc.
General	
Working Temperature/ Humidity	-4 ° F - 140 ° F (-20 ° C - 60 ° C) Humidity 90% or less (non-condensing)
Power Supply	12V DC
Power Consumption	Max. 7 W
Ingress Protection	IP66
IR Range	131ft(40m)
Dimensions	Φ 5.72" × 4.89" (Φ 145.3 × 124.2 mm)
Weight	2.0lb(880g)