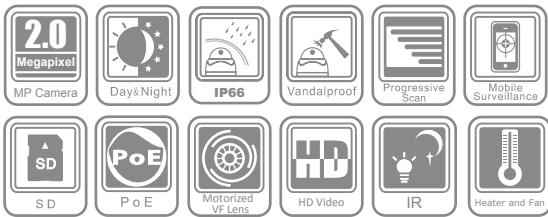


## CMIP3923-Z

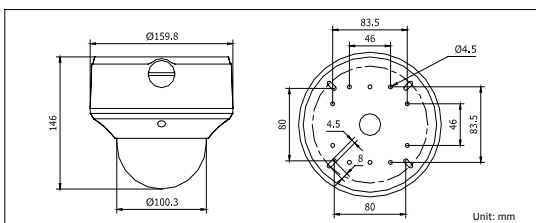
### 2MP Outdoor Network Camera



#### Key features

- 2 megapixel (1600 x 1200) high resolution
- HD720p real-time recording
- 1/3" sensor
- Motorized V/F lens
- Day / night auto switch
- Vandal-proof housing
- IP66 rating

#### Dimensions



| CMIP3923-Z                  |  |
|-----------------------------|--|
| <b>Camera</b>               |  |
| Image sensor                | 1/3" sensor  |
| Min. illumination           | 0.5 lux @F1.4, AGC ON<br>0.8 lux @F1.6, AGC ON<br>0 lux with IR  |
| Shutter time                | 1/25s ~ 1/100,000s   |
| Lens                        | 2.8 ~ 12 mm @F1.4, angle of view: 98° ~ 30.5°  |
| Lens mount                  | Φ14  |
| Auto iris                   | DC drive   |
| Angle Adjustment            | Pan: 0 ~ 355°, Tilt: 0 ~ 80°, Rotation: 0 ~ 355°   |
| Day & Night                 | IR cut filter with auto switch   |
| <b>Compression Standard</b> |  |
| Video compression           | H.264 / MPEG4 / MJPEG  |
| Bit rate                    | 32 Kbps ~ 16 Mbps  |
| Dual stream                 | Yes  |
| <b>Image</b>                |  |
| Max. Resolution             | 1600 × 1200  |
| Frame rate                  | 60Hz: 15fps (1600 × 1200), 15fps (1600 × 912), 25fps (1280 × 960), 30fps (1280 × 720)<br>50Hz: 12.5fps (1600 × 1200), 12.5fps (1600 × 912), 25fps (1280 × 960), 25fps (1280 × 720) |
| Image settings              | Saturation, Brightness, Contrast adjustable by client software or web browser  |
| <b>Network</b>              |  |
| Network storage             | NAS (iSCSI optional)   |
| Alarm trigger               | Motion detection, tampering alarm, network disconnect, IP address conflict, storage exception  |
| Protocols                   | TCP/IP, HTTP, DHCP, DNS, DDNS, RTP/RTSP, PPPoE, SMTP, NTP, SNMP, HTTPS, FTP, 802.1x, Qos (SIP, SRTP, IPv6 optional)  |
| Security                    | User authentication, watermark   |
| <b>Interface</b>            |  |
| Communication interface     | 1 RJ45 10 M / 100 M Ethernet interface   |
| Video output                | 1 Vp-p composite output (75 Ω/RCA)   |
| On-board storage            | Built-in Micro SD card slot, up to 32 GB   |
| Reset button                | Yes  |
| <b>General</b>              |  |
| Operating conditions        | -10° C ~ 60° C (14° F ~ 140° F), humidity 90% or less (non-condensing)   |
| Power supply                | 24 VAC ± 10%, PoE (802.3af)  |
| Power consumption           | Max. 9 W, Max. 12 W with IR cut filter on  |
| Impact protection           | IEC60068-2-75Eh, 50J; EN50102, up to IK10  |
| Ingress protection level    | IP66   |
| IR range                    | Approx. 65 ~ 100ft (About 20 ~ 30m)  |
| Dimensions                  | Φ159.8 × 146 mm (Φ 6.29" × 5.75" )   |
| Weight                      | 2100 g (4.62 lbs)  |

\* Product picture and technical specs subject to change without previous notice. For further information, please contact our local sales representatives.