

# CMIP3953-Z

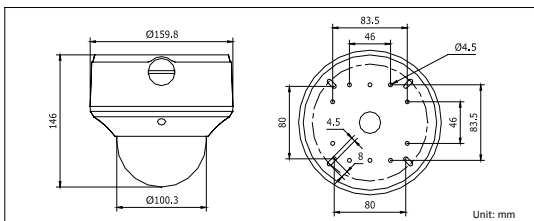
## 5MP Outdoor Network Camera



### Key features

- 5 mega-pixel (2560 x 1920) high resolution
- Full HD1080p real-time recording
- 1/2.5" sensor
- Motorized VF lens
- Day / night auto switch
- Vandal-proof housing
- IP66 rating
- Approx. 65~100ft IR LEDs(20~30m)

### Dimensions



CMIP3953-Z	
<b>Camera</b>	
Image sensor	1/2.5" sensor
Min. illumination	0.6 lux @F1.2, AGC on, 1 lux @F1.6, AGC on, 0 lux with IR
Shutter time	1/25s ~ 1/100,000s
Lens	3.5 ~ 9 mm @F1.6, angle of view: 92° ~ 36°
Lens mount	Φ14
Auto iris	DC drive
Day & night	IR cut filter with auto switch
<b>Compression Standard</b>	
Video compression	H.264 / MPEG4 / MJPEG
Bit rate	32 Kbps ~ 16 Mbps
Dual stream	Yes
<b>Image</b>	
Max. Image Resolution	2560 × 1920
Frame rate	60 Hz: 7.5fps (2560 x 1920), 15 fps (2048 × 1536), 30 fps (1920 × 1080), 30 fps (1600 × 1200), 30fps (1280 × 720) 50 Hz: 6.25fps (2560 x 1920), 12.5 fps (2048 × 1536), 25 fps (1920 × 1080), 25 fps (1600 × 1200), 25fps (1280 x 720)
Image settings	Saturation, brightness, contrast adjustable by client software or web browser
<b>Network</b>	
Network storage	NAS (iSCSI optional)
Alarm trigger	Motion detection, tampering alarm, network disconnect, IP address conflict, storage exception
Protocols	TCP/IP, HTTP, DHCP, DNS, DDNS, RTP/RTSP, PPPoE, SMTP, NTP, SNMP, HTTPS, FTP, 802.1x, Qos (SIP, SRTP, IPv6 optional)
Security	User authentication, watermark
<b>Interface</b>	
Communication interface	1 RJ45 10 M / 100 M Ethernet interface
Video output	1 Vp-p composite output (75 Ω/RCA)
On-board storage	Built-in Micro SD slot, up to 32 GB
Reset button	Yes
<b>General</b>	
Operating conditions	14 ° F ~ 140 ° F (14 ° F ~ 140 ° F) Humidity 90% or less (non-condensing)
Power supply	24 VAC ± 10%, PoE (802.3af)
Power consumption	Max. 9W (max. 12W with IR cut filter on)
Impact protection	IEC60068-2-75Eh, 50J; EN50102, up to IK10
Ingress protection level	IP66
IR range	Approx. 65~100ft (20 ~ 30m)
Dimensions	Φ6.29" × 5.75" (Φ159.8 × 146 mm)
Weight	4.62 lbs(2100g)