

CMIP7223-S

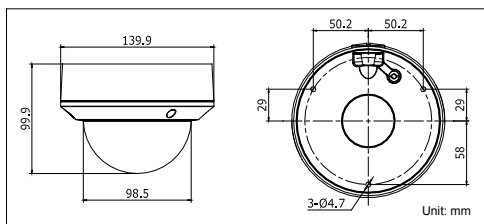
2.0MP VF IR Dome Network Camera



Key features

- 2 megapixel (1920×1080) high resolution
- Full HD1080p real-time video
- 2.8-12mm varifocal lens
- Video Content Analytics(VCA)
- Region of Interest(ROI)
- IR LEDs: up to 100ft(about 30m)
- DWDR & 3D DNR & BLC
- Onboard storage (up to 64GB)
- Audio I/O, Alarm I/O
- IP66
- Vandal-proof

Dimensions



CMIP7223-S	
Camera	
Image sensor	1/3" sensor
Min. illumination	0.014lux @(F1.4,AGC ON) 0 lux with IR
Shutter time	1/25s ~ 1/100,000s
Lens	2.8 ~ 12mm @ F1.4, Angle of view: 113° -33.8°
Lens mount	Φ14
Day & night	ICR
ROI	Yes, up to 4 configurable areas
Digital noise reduction	3D DNR
Wide dynamic range	Digital WDR
Backlight compensation	Yes, zone optional
Angle adjustment	Pan: 0° - 355°, Tilt: 0° - 75°, Rotation: 0° - 355°
Compression standard	
Video compression	H.264 / MJPEG
H.264 compression profile	Main profile
Bit rate	32 Kbps ~ 16 Mbps
Audio compression	G.711/G.726/MP2L2
Audio bit rate	64Kbps(G.711) / 16Kbps(G.726)/ 32~128Kbps(MP2L2)
Dual Stream	Yes
Image	
Max. image resolution	1920×1080
Frame rate	60Hz: 30fps (1920×1080) 50Hz: 25fps (1920×1080)
Image settings	Saturation, brightness, contrast adjustable through client software or web browser
Network	
Network storage	NAS
Alarm trigger	Motion detection, Tampering alarm, Network disconnect, IP address conflict, Storage full, Storage error
Protocols	TCP/IP,ICMP,HTTP,HTTPS,FTP,DHCP,DNS,DDNS,RTP,RTSP,RTCP,PPPoE,NTP,UPnP,SMTP,SNMP,IGMP,802.1X,QoS,IPv6,Bonjour
System compatibility	ONVIF, PSIA, CGI, ISAPI
General functionalities	User Authentication, Watermark
Interface	
Communication interface	1 RJ45 10M / 100M ethernet port
On-board storage	Built-in Micro SD/SDHC/SDXC card slot, up to 64 GB
Audio Input/Output	1/1
Alarm Input/Output	1/1
General	
Operating conditions	-22° F ~ 140° F (-30° C ~ 60° C), humidity 95% or less (non-condensing)
Power supply	DC12V ± 10%, PoE (802.3af)
Power consumption	Max. 5.5W
Impact protection	IEC60068-2-75Eh, 50J; EN50102, up to IK10
Ingress protection level	IP66
IR range	Up to 100ft(About 30m)
Dimensions	Φ5.5"×3.9"(Φ140.0 x 99.9mm)
Weight	2.2lbs(1000g)